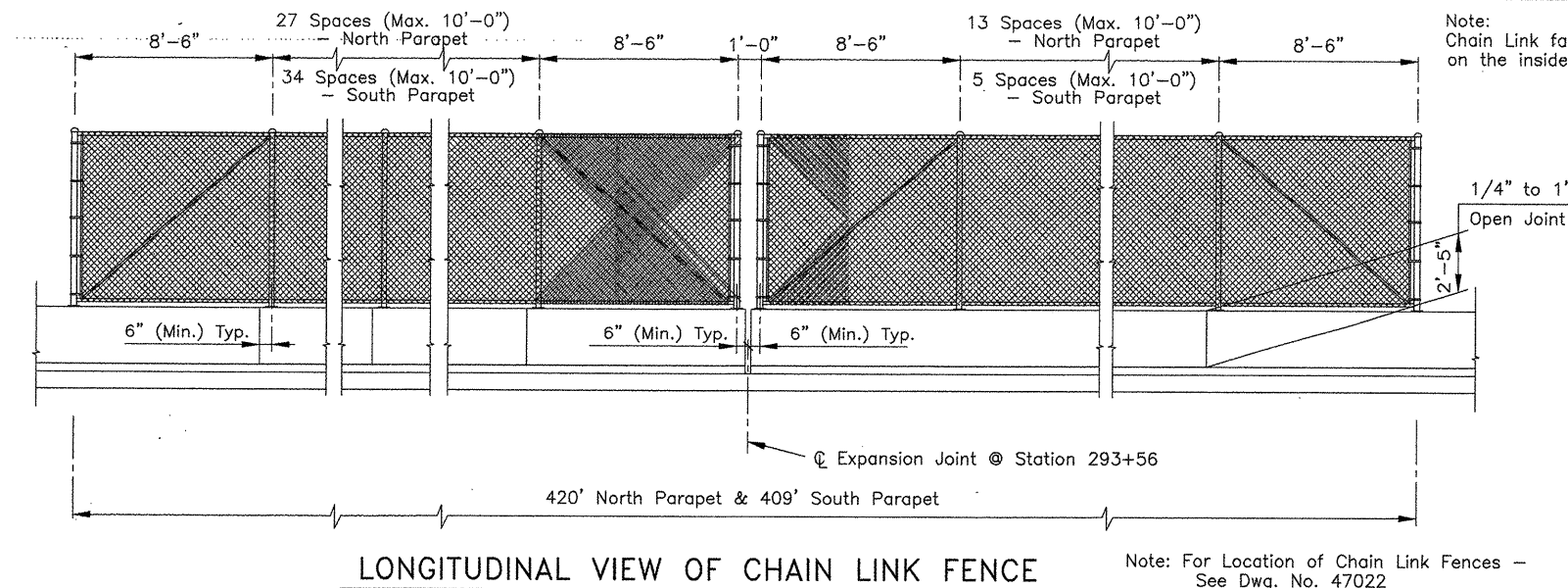


COMPANY\1999 JOBS\99-044 AHTD\WHITERIVER\JOB 110395\264 SibPhn02 ACAD SCALE: 1/8"=1'-0"



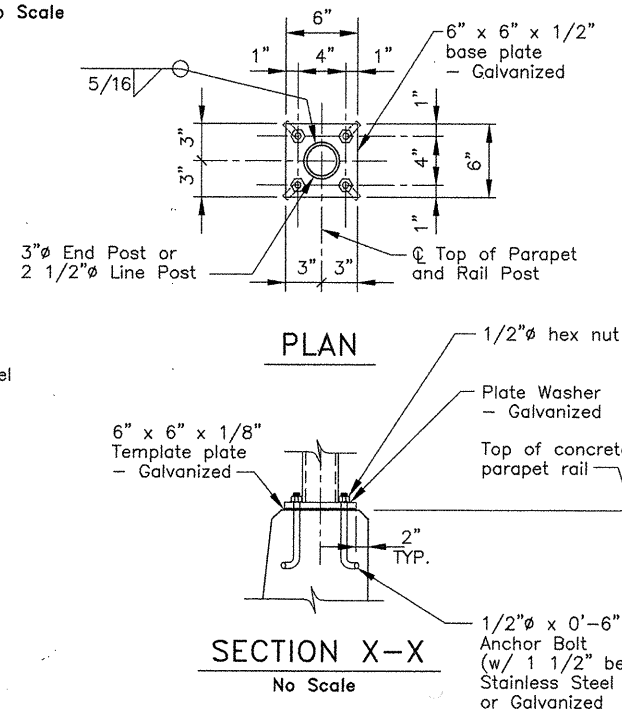
Anchor Bolts shall be of stainless steel or High Strength Steel. Stainless Steel anchor bolts shall conform to ASTM A193 or A320-Grade B8 with a minimum yield Strength of 80,000 psi. High Strength Steel Anchor Bolts shall conform to AASHTO M164 or ASTM A354-Grade BC Galvanized in accordance with AASHTO M232.

Nuts: Nuts shall conform to ASTM A194-Gr. 8 (Stainless Steel) or AASHTO M164 Galvanized in accordance with AASHTO M232.

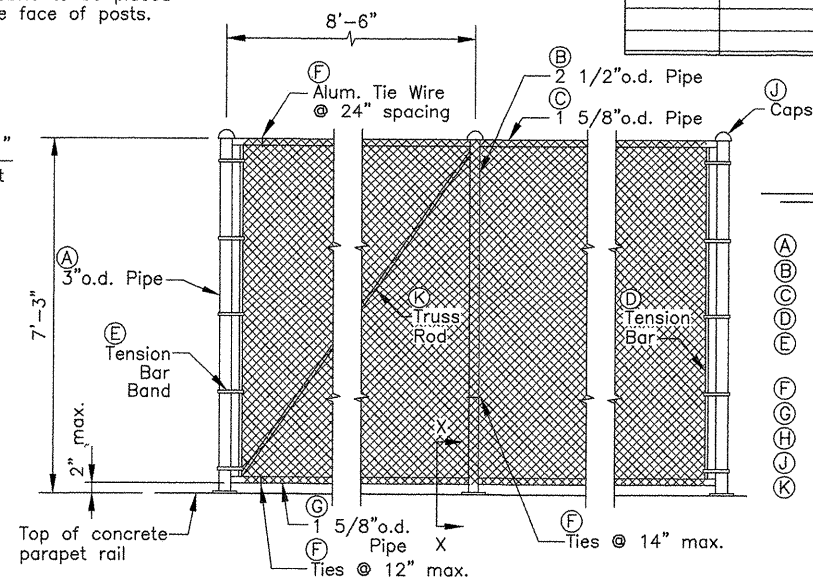
Threads: Threads on bolts, Screws and Nuts shall conform to American Standard Course Series, Class 2 Fit, ASA Specification B.1.

Washers shall be of High-Strength Steel conforming to AASHTO M270, Gr.36 Galvanized in accordance with AASHTO M232 or of Stainless Steel conforming to ASTM A276 or A167-Type 302.

Anchor Bolt installation, use an approved Epoxy per AHTD Qualified Products List and Section 507.03 of Specifications.



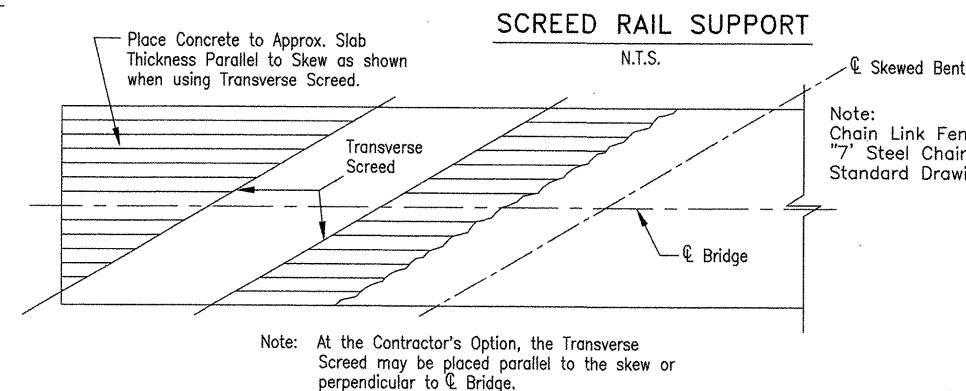
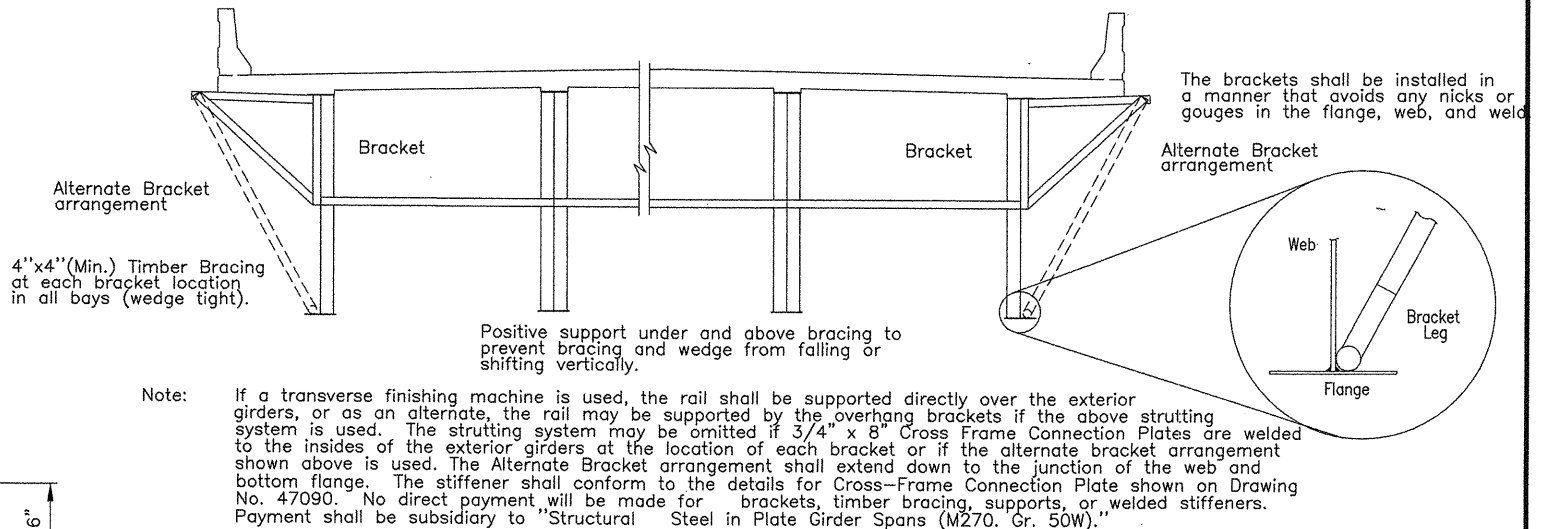
Note: Chain Link fabric to be placed on the inside face of posts.



DETAIL OF CHAIN LINK FENCE

No Scale

- (A) END POST: 3" O.D.
- (B) LINE POST: 2 1/2" O.D.
- (C) TOP RAIL: 1 5/8" O.D.
- (D) TENSION BAR: 316" x 3/4" Bar
- (E) TENSION BAR BAND: 3/4" x 0.74 w/ 5/16" x 1 1/4" Bolt (1 Band Top & Bottom w/ 15" max. spaces)
- (F) TIE WIRE: 9 Ga. Aluminum
- (G) BOTTOM RAIL: 1 5/8" O.D.
- (H) FABRIC: 9Ga. 2" Mesh w/ Knocklug Or Twisting Selvage
- (J) CAPS: All Posts shall be Capped & Shall Conform to ASTM F626-84
- (K) TRUSS RODS: Min. of 5/16" Round with Tighteners and Fittings



CONCRETE PLACEMENT PROCEDURE

N.T.S.

Longitudinal Screeds Prohibited From Station 281+36.29 to Station 300+71.23

ALTERNATE NO. 1 & 2

DETAILS OF 386' CONT. COMP. PLATE GIRDER UNIT (SHEET 10 OF 11)

WHITE RIVER STR. & APPRS (CLARENDON) (PH III) (F) MONROE COUNTY

ROUTE 79 SEC. 13

ARKANSAS STATE HIGHWAY COMMISSION
LITTLE ROCK, ARK.

Engstrom/Modjeski and Masters, Inc.

DRAWN BY: JDB DATE: Sep. 10 FILENAME: b11039514_s09
CHECKED BY: YO DATE: Sep. 10 SCALE: 1/8"=1'-0"
DESIGNED BY: GPT DATE: Sep. 10
BRIDGE NO. 06830 DRAWING NO. 47093

BRIDGE ENGINEER